

Fat Quarter Newsletter



BLOCK OF THE MONTH

Twenty members signed up to receive the November **Turkey** block pattern. Eighteen members picked up their pattern at the November meeting however only five completed blocks were turned in at the December meeting. Lana Pries won the drawing and received six blocks including my preview block. I received another completed block at the January meeting and gave it to Lana. **Sven the Reindeer** from "Frozen" was the first in the series of animated characters from movies. Eleven members signed up for this block at the November meeting and five additional members opted to receive their packet at the December meeting. Of these sixteen members only two turned in their completed block at the January meeting. I decided to wait until the February meeting to have the drawing for the **Sven** block, and hopefully many more members will have their blocks completed.

Also previewed at our November meeting was the **Bowie**, the first in a series of blocks named for rock stars or groups. Eight members signed up in November to receive this block and two additional members opted to receive their pattern in December. Members keep the blocks from this series, and none have been turned in for members to view.

The second in the series of animated character blocks was **Olaf the Snowman**, also from the movie "Frozen". Ten members received their **Olaf** patterns at the January meeting.

The second in the series Block Rock'n is **Zeppelin**. Eleven members signed up to receive this pattern, and nine of those members picked up their pattern at the January meeting.

Previewed at the January meeting were the third animated character block **Anna** from the movie "Frozen", and the third Block Rock'n pattern titled **Lithium**. Eight members signed up to receive the **Anna** packet, and nine members signed up to receive the **Lithium** pattern.

Lorne Pleger, BOM Committee Chairman



**Next Guild
Meeting-
February
12, 2015,
6:00 Ta-
ble Walk**

**Sable:
Winter
White**

Finishing School

February 26th is the date for Finishing School. 10am to 4pm at the Carriage House (across from Pig'n Pancake) in Newport. Bring your lunch.

In February Karen Dornobedian is going to demonstrate how to make and apply a facing to a quilt. She will have instructions available to take home and/or be emailed to you (in case I run out of copies). This is a good method for art quilts or quilts where bindings might be inappropriate.

Also, some of you mentioned that you need help with making and applying bindings. Paulette and Karen are willing to help you with that process. Karen uses Sharon Schamber's glue method of making and applying the binding. So bring your machine and your potholders and we'll help you apply your bindings. Karen will also show you how to eliminate bulk at the corner's with Patrick Lose's method. We can do this at any Finishing School. Bring your pre-made bindings (or cut the strips and Karen will show you Sharon's method of using glue to make the binding strips), your machine, your quilt or your potholder (plus essential sewing supplies).

SILENT AUCTION!

MARCH 12TH GUILD MEETING

Get busy looking at all those supplies, patterns and fabrics that you bought and thought you'd use. Maybe someone else could use them and you'd make some money to go out and buy more!!! You can also sell gently used items, even patterns. We have even had some nice sewing machines sell.

How it works:

1. Go to the Guild Website and download the Auction Bid Sheet in the RECORDS folder. Put your item name on the top, your name next and the minimum amount you'll take for the item. **It's easier if you price the items in increments of \$1.00.**

NEW THIS YEAR - "BUY IT NOW" price

This year an option to "Buy it Now" is also available. Enter the "Buy it Now" price in the box provided. This will be the one price you will accept without any bidding. If this price is paid, no other bidding is allowed.

2. Tape or pin this sheet to your item.

3. At the February meeting, get numbered dots for each of your items. Let someone at the Workshops Table know how many dots you need. If you will not be at the February meeting you may contact Heidi at lunasea53@peak.org or Loretta at ljh@peak.org, to make arrangements for the dots. You'll get two dots with the same number, one goes on the item and one goes on the Auction Bid Sheet. That way if the Auction Bid Sheet gets separated from the item the members bidding on the item can match them up. It's a good idea to get the dots early so you are ready for the auction. You can also get dots at the March meeting but you'll be busy applying dots to your items and sheets before the program.

4. You can have a short commercial before the bidding opens. Let the Workshop committee know you want to do a commercial at Table Walk before the meeting.

5. When the bidding opens, members will have 30 minutes to place bids on the items. They can enter the minimum bid or whatever they are willing to pay. Other members can outbid the prior bid until the bidding closes. OR, they can choose the "Buy it Now" price and bidding is closed.

6. The seller and buyers will have 15 minutes after the break to determine who the highest bidder is. There will be several Silent Auction Personnel that will help round up the buyers. The highest bidder will need to pay the person selling the item. This can be a hectic time, so if you have bid on an item, remember what it was and who the seller was. It's easier if the bidder goes to the seller rather than wait for your name to be called.

Sellers: bring some petty cash to make change to the purchasers.

Bring Cash and/or your Checkbook!

**OCQG
MINUTES OF EXECUTIVE BOARD MEETING
NOVEMBER 20, 2014**

CALL TO ORDER

The meeting was called to order by President Jane Szabo at 10:00 A.M.

A quorum was present. Nineteen members were at the meeting.

The October minutes were corrected to show that the \$6.47 mentioned was a credit for a previous fee. Move by Tesse to accept as corrected; seconded by Joan.

The Treasurer's report was accepted. Pat clarified that Guild checks can still be cashed after November 30, but we are encouraged to cash them before that so end of fiscal year business can be cleared up.

OLD BUSINESS

Logo Committee - Susan C. volunteered to gather prices for items related to the new logo, such as new member pins, stamps, name tags, business cards, Guild brochure, etc. Money is in the budget for expenses such as these.

NEW BUSINESS

There are still a few Guild positions open for 2016. Help is needed for the 2016 Quilt Show, for the Audit position, for the Library, on the Workshop Committee, and on the Hostess Committee.

Twy suggested having an earlier start time for our daytime meetings. A motion was made by Becky to begin daytime Table Walk at 12:30, with the meeting starting at 1:00 P.M. Seconded by Norma. Passed by voice vote with one vote opposed. This will be brought to the Membership for approval.

Twy made a motion to return to a regular potluck, rather than finger food, for our December meeting starting in 2015. Seconded by Sue. Passed by voice vote.

Jane brought up for discussion a member suggestion to have a table at Guild meetings where members could buy donated items, with proceeds going to the Guild. There was little support for the idea at this time.

COMMITTEE REPORTS

Community Service - Norma will write an article for the newsletter regarding requirements for donated pet beds. It was also suggested that guidelines for pet beds, dialysis pillows, etc., be added to our web site.

Hostess - Lucy will put an article in the newsletter about our upcoming Holiday Tea.

Programs/Workshops - Becky reported that January's program would about our Guild's Quilting Legacies. No workshop in January.

Finishing School - Coming up in February, Karen Donobedian will demonstrate a new binding method at the Carriage House.

Quilt Show - Susan C. will make up a rack card advertising the Quilt Show on one side and our Raffle Quilt on the other side. These were very successful last year. We will continue to have page size posters to put up at various locations with the notation "First Friday and Saturday in August."

For the 2015 Quilt Show, our 25th anniversary, instead of a Featured Quilter, we will be showing prize-winning quilts from the last 25 years.

We want to have as many pot-holder name tags as possible to display at the Quilt Show, with all encouraged to participate.

Raffle Quilt Ticket Sales - Janet will start having the tickets available at the January meeting.

Twy has gathered all the patterns from the 2015 Raffle Quilt so Susan can get them printed up for sale at the various shops where our quilt will be shown.

Retreat - The subject of retreat refunds was brought up; to be discussed at a future time.

SABLE - December's fabric is Winter White.

SABLE needs to have a budget for buying tickets in next year's budget. The meeting was adjourned at 11:35 A.M.

Respectfully submitted,
Shirley Kemnitz, Secretary

Fat Quarter Raffle

Two baskets of Fat Quarters will be added to the Silent Auction at the 2015 Quilt show. Raffle tickets will be sold and each day a ticket will be drawn and a basket given to the winner. We are asking each member of the OCGQ to donate 2 Fat Quarters to this new attraction of our Quilt Show. Please bring your Fat quarters to the guild Meetings and there will be a Fat Quarter Basket for collecting them.

Thank you,

Twy Hoch

COMMUNITY SERVICE

The Hospital has said they do not need any pillows at this time.

DOG BEDS: You can bring in the scraps and we will fill the beds, or you can fill dog beds yourself.. Please watch what you are putting into the Beds, we have found pins, needles, paper, any thing that makes a sound the dogs will try to get in side. Please cut up large items like pants, dresses, coats in to small pieces. NO UNDERWEAR OR NYLONS. The dog beds should be fluff and not hard packed. Thank you Lisa Hall for donating your time for these special dogs and cats.

QUILT TOPS: We have quilts, tools, bottoms, batting an binding in kits for members to take home and complete. you can hand tie or machine quit if you want. If you need help in how to hand tie we can help with instructions. What we would like to know is how you would like the quilt kits presented in future. Kits that you have to sew the top an finish quilt or a kit that is put together and you need to complete. Please let me know. Norma Horn 541-563-7093

REIMBURSED: If you need batting or filling to complete quilts or pillows call me and I will try to get the item to you, If you buy please save your receipt and bring to Second Thursday meeting for reimbursement.

Any person working on a quilt for community quilts, if you need fabric to complete you can get from Community Quilts stash at Quilters Cottage you are welcome to our donations.

Norma Horn



POTHOLDER NAME TAGS

To commemorate our 25th year as a guild and to have a fun, project for our members:

Make a "potholder" name tag to display at our 2015 quilt show. This name tag wouldn't necessarily be worn as a name tag in the future (unless just for fun) but to demonstrate creativity AND to recall our guild history.

(These sorts of name tags were worn by many quilt groups across the country years ago, and a few guilds still use them today.)

Rules:

Make a quilted (three layers) 6" square potholder, bound, with a 1" hanging loop on one corner. The color and design are your choice, but a quilted mermaid--or the hint of one--is encouraged. Use any technique (applique, pieced, painted, embellished, etc). But please, for safety's sake, no sharp objects in your design!

Front side must include the following (plus other elements if you choose):

*The name of our guild (Either "OCQG" or spelled out, "Oregon Coastal Quilt Guild")

*Your own name (Either full name or just your first name)

Please put your full name (first and last) on the back and date it for memory's sake. You can turn your potholder name tag in at any time, but the final deadline will be the June meeting, 2015.

Be creative! Enjoy! Let's have a name tag for each member turned in for display. Let's show each other (and our visitors) our roots as well as our fun side!

Betty Jones and Jean Amundson

QUILTER'S CHALLENGE

Quilter's Challenge

Please consider making a 25 inch square quilt which is your version of our View of the Lincoln County Coast. It can be pieced or appliquéd. Since the view is from a boat, the water is at the bottom of the quilt. Then, possibly beach, bridge, lighthouse, trees, mountains, sky. The horizon should be between 5-9 inches from the top at the quilt sides. You also need to include a portion of Highway 101 plus three natural local

items like fish, birds, shells, crabs. There is fabric available for 101 which you can pick up at Guild meetings. The grand plan is to have these quilts as a traveling exhibit so please be creative and make one. The Guild Challenge will be due before the June Guild meeting.

Jane Szabo and Ginger Dale



Quilters Cottage
1610 N. Coast Hwy
Newport, OR 97365
541-265-4248
www.quilterscottageor.com



Lisa J. Taylor
Quilting and Fiber Arts

Quilter in the Glen

PO Box 686
Waldport, OR 97394

ljtquilts@gmail.com
<http://sites.google.com/site/glenquilts>



541-563-7299

cell 541-272-1008

Fabric • Patterns • Notions • Hot Ribbon

**QUILTER'S
COVE**

www.quilterscove.net

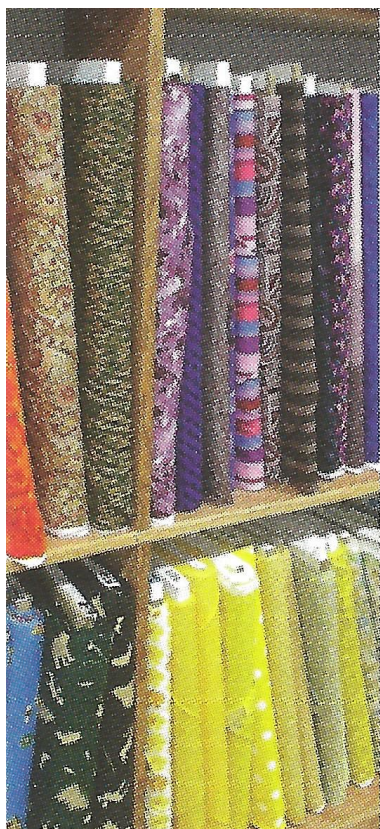
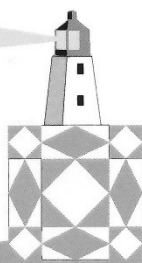
27 N Coast Hwy • Newport OR 97365

Holly Nevins

(541) 265-2591 • 866-43QUILT(7-8458)



quilterscove@gmail.com



Family Fabrics

Ruth Stole

Coyote Creek Fabrics

Judy Anderson

P O Box 257

180 NW Highway 101

Waldport, OR 97394

Phone 541-563-3064

ruth@familyfabrics.com coyotecreekfabrics@gmail.com

www.etsy.com/shop/coyotecreekfabrics



There were many more photos taken at the December and January Guild Meetings. Take a look on our website to see them and the captions that go with these. Judy McCoy is a terrific photographer!



FAT QUARTER NEWS

Oregon Coastal Quilters Guild

P.O. Box 382

South Beach, OR 97366

Www.oregoncoastalquilters.org

Kathleen Ritzman, Editor

Guild President: Cindy McEntee

UPCOMING CLASSES: MARCH & APRIL

USE UP THOSE UGLY FABRICS! Saturday, March 14, 9:30-4:30 . Instructor: Nancy Terhaar. Cost \$23.

Do you ever wonder what possessed you to buy some of the fabrics you have in your stash? Were they on such a good sale, you just couldn't pass them up? Or maybe Momma or Aunt Gertie left you a bunch of funny old fabric you just don't have the heart to throw out. Well, here's your chance to use them up AND make a pretty, eye-catching quilt reminiscent of a twisting kaleidoscope. (Level: This might be challenging for a beginning quilter.)

APRIL: ENDANGERED SPECIES. FRIDAY, April 10, 2015 with Rob Appell. Cost \$62 plus \$18 for pattern. Kit is \$49

Rob comes from the San Diego area of California and has a background in Nature and Ecology. Choose from among Rob Appell's Endangered Species patterns (currently there are 12 selections) to make an applique quilt. Partial proceeds from pattern sales are donated to support preservation of these endangered species. Level: Beginner to Intermediate and above.

Look for photos of his quilts on the Guild website.