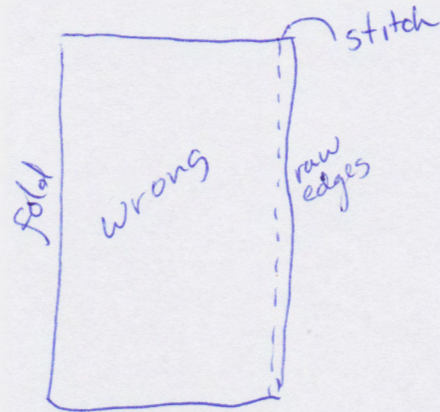
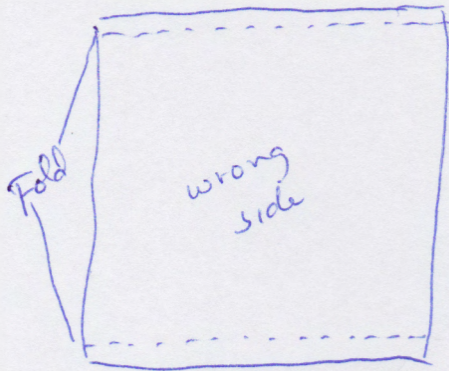


ONCOLOGY BAG

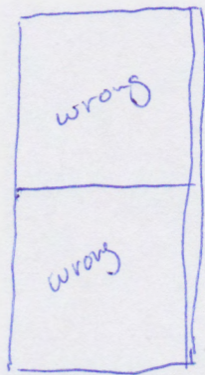
12" square fabric for body

36" to 40" of 2" or 2-1/4" matching or coordinating fabric for strap

1. Turn over 1/2" on 2 opposite sides of fabric and iron fold. Push this fold back and fold, right sides together, the raw edges together and sew a 1/2" seam. Press seam open.



2. Find the center of the bag. Draw a line across the center starting at fold and ending on the sewn line. Sew across this line beginning and ending with a back stitch.



3. Fold the inside of the bag over the outside of the bag, matching the folded and pressed edges (which is now the top edge of the bag).

STRAP

Press the wrong sides together through the middle on the length of strap matching the edges. Fold and press the raw edges into the first fold so that you now have about a $\frac{1}{4}$ " strap. Sew down both sides of the length.

Place the strap as close as possible to the pressed and seam edges of the bag between the inside and outside of the bag, about $\frac{3}{4}$ " below the folded/pressed top edge. Check that strap is not twisted. Pin in place.

Match the folded edges on the top of the bag, pin in place and sew around the edge of the bag, stitching close to the edge. Stitch again an $\frac{1}{8}$ " below first stitch line. (Back stitch over the handles as you sew around the bag to add some strength).

